



Electrical Controls for Industry

Telemecanique Drives Solutions from BPX

Edition 2

The brochure from BPX with everything
you need to know about Telemecanique
Variable Speed Drives



Altistart 01



Altistart 48



Altivar 11



Altivar 31



Altivar 61



Altivar 71



**PowerSuite
software**



**Texa enclosure
cooling fans**

This document shows list prices, for discounts please contact your local branch

Leicester
Tel: 0116 2999 100
Fax: 0116 2999 201

Northampton
Tel: 01604 759906
Fax: 01604 759916

Slough
Tel: 01753 619030
Fax: 01753 825418



Electrical Controls for Industry

distributing technology

Introducing BPX

BPX is a specialist distributor of industrial electrical control and automation products. Our head office is in Leicester and there are six BPX branches throughout the UK.

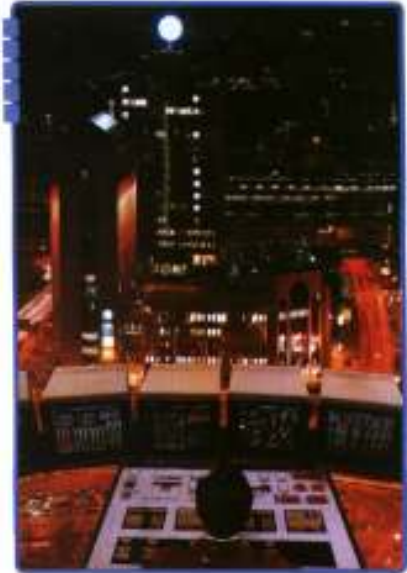
BPX Electro Mechanical Co. is the original member of the BPX Group which also includes the companies Controls and Drives, Ranger Computer Systems and Leicester Switch & Control. These businesses operate in the complementary areas of automation solutions, system integration and computer distribution.

3 reasons to choose BPX

1 Best Products
BPX carries an unrivalled list of authorised distributorships from the market leaders in control and automation.

2 Best Services
BPX customers consistently report service levels to be the best in the business.

3 Best Value
BPX is confident it offers the best value by price and service.



products



The BPX product range offers solutions for all factory automation and industrial control applications.

With distributorships from the market leaders in the controls business including **Telemecanique, Mitsubishi, Omron, Merlin Gerin, Pilz, Weidmuller** and 35 other major manufacturers BPX is uniquely equipped.

Since BPX was appointed as Telemecanique's first UK distributor over 30 years ago, we have remained the UK's largest single outlet of Telemecanique components. Motor control gear remains at the core of the BPX product range.

Telemecanique is now a central part of the Schneider Electric group including Merlin Gerin, Sarel and Square D. BPX distributes the full Schneider portfolio.

BPX is one of a handful of companies appointed by Schneider as Automation Technical Distributors (ATD) to spearhead Schneider's growth in automation applications. As an ATD, BPX is equipped with specialist support dedicated to Schneider PLCs, HMIs and Drives products.

Telemecanique Merlin Gerin



Leicester
Tel: 0116 2999 100
Fax: 0116 2999 201

Northampton
Tel: 01604 759906
Fax: 01604 759916

Slough
Tel: 01753 619030
Fax: 01753 825418

Edition 2

What's new in this edition?

The range of Telemecanique soft-starts & drives

- Soft-starts from 0.37 to 630kW
- IP21 drives
- IP54/55 drives
- Single phase drives
- Three phase drives
- Drives from 0.18 to 630kW

Please see the sections further on in this brochure for more details of the exciting Telemecanique range.

The "Solutions" brochures range:

- Telemecanique Drives Solutions from BPX
- Mitsubishi Drives Solutions from BPX
- Mitsubishi HMI Solutions from BPX
- Mitsubishi Servo Solutions from BPX
- Mitsubishi Software Solutions from BPX
- Electric Motor Solutions from BPX
- Cable Management Solutions from BPX

If you would like any of the above range of brochures, personalised with your company name & showing your discounted prices, please contact your local branch or e-mail marketing@bpx.co.uk

Altistart 01

product information



Simple soft start units

- *Single phase 0.37 – 2.2 kW*
- *Three phase 2.2 – 45 kW*
- *Compact*
- *Easy to install*
- *Can be mounted side by side*

The Altistart 01 soft starter operates either as a torque limiter on starting, or as a soft start/soft stop unit for asynchronous motors.

Using the Altistart 01 starter enhances the starting performance of asynchronous motors by allowing them to start gradually, smoothly and in a controlled manner. It prevents mechanical shocks, which lead to wear and tear, and subsequent maintenance work and production downtime.

The Altistart 01 limits the starting torque and current peaks on starting on machines which do not require a high starting torque.

Specifications

Altistart 01	0.37 – 2.2kW 1ph	2.2 – 15kW 3ph	22 – 45kW 3ph
Degree of protection	IP20	IP20	IP20 on front panel
Peak current reduction	No (1 controlled phase)	Yes (2 controlled phases)	Yes
Adjustable starting time	1 – 5 s	1 – 10 s	1 – 25 s
Adjustable stopping time	No: freewheel stop	1 – 10 s	1 – 25 s
Adjustable starting torque	30 – 80% of DOL motor starting torque		
Logic inputs	-	3 (start, stop & startup boost)	2 (run & stop)
Logic outputs	-	1	-
Relay outputs	-	1	1
Control supply voltage	110-240VAC, 24VDC	Built into the starter	110VDC
Supply voltage	1ph 110 – 230 V	3ph 380 – 415 V	3ph 400 V
Dimensions W x H x D	N103-N106 – 22.5 x 100 x 100	N206-N212 – 45 x 124 x 130	N244 – 180 x 146 x 126
	N109-N125 – 45 x 124 x 130	N222-N232 – 45 x 154 x 130	N272-N285 – 180 x 254.5 x 126

This document shows list prices, for discounts please contact your local branch

Single Phase 110 - 230V

Part number	kW	Description	Price	Discount	Nett price
ATS01N103FT	0.37	3A soft start	£100.00	Call	Call
ATS01N106FT	0.75	6A soft start	£104.00	Call	Call
ATS01N109FT	1.1	9A soft start	£107.00	Call	Call
ATS01N112FT	1.5	12A soft start	£112.00	Call	Call
ATS01N125FT	2.2	25A soft start	£125.00	Call	Call

Three Phase 380 - 415V

Part number	kW	Description	Price	Discount	Nett price
ATS01N206QN	2.2 - 3	6A soft start / soft stop	£112.00	Call	Call
ATS01N209QN	4	9A soft start / soft stop	£121.00	Call	Call
ATS01N212QN	5.5	12A soft start / soft stop	£139.00	Call	Call
ATS01N222QN	7.5 - 11	22A soft start / soft stop	£154.00	Call	Call
ATS01N232QN	15	32A soft start / soft stop	£193.00	Call	Call
ATS01N244Q	22	44A soft start / soft stop	£263.00	Call	Call
ATS01N272Q	37	72A soft start / soft stop	£292.00	Call	Call
ATS01N285Q	45	85A soft start / soft stop	£386.00	Call	Call

Prices shown exclude VAT & are subject to BPX standard terms & conditions of sale

Leicester
Tel: 0116 2999 100
Fax: 0116 2999 201

Northampton
Tel: 01604 759906
Fax: 01604 759916

Slough
Tel: 01753 619030
Fax: 01753 825418

Altistart 48

product information



Soft start / soft stop units

- Three phase 7.5 – 630 kW
- Suitable for high inertia machines
- Torque control system
- Simplified start up
- Protection for the motor

The Altistart 48 soft start - soft stop unit is a controller with 6 thyristors which is used for the torque-controlled soft starting and stopping of three-phase squirrel cage asynchronous motors in the power range between 7.5 and 630 kW.

It offers soft starting and deceleration functions along with machine and motor protection functions as well as functions for communicating with control systems. These functions are designed for use in state-of-the-art applications in centrifugal machines, pumps, fans, compressors and conveyors, which are primarily to be found in the construction, food and beverages and chemical industries.

The high performance algorithms of the Altistart 48 contribute significantly to its robustness, safety and ease of setup.

Specifications

Protection	Degree of protection	IP20: ATS48D17Q to ATS48C11Q		
	Motor thermal protection	IP00: ATS48C14Q to ATS48M12Q		
EMC	Class A	On all starters		
	Class B	On all starters up to 170A		
Starting mode	Torque control (patented TCS: Torque Control System)			
I/O	Analogue inputs	1 PTC probe		
	Logic inputs	4, 2 of which are configurable		
	Logic outputs	2 configurable		
	Analogue outputs	1		
	Relay outputs	3, 2 of which are configurable		
Dialogue	Integrated or remote display terminal, or PowerSuite software			
Communication	Integrated	Modbus		
	Available as an option	DeviceNet, Ethernet TCP/IP, Fipio, Profibus DP		
Dimensions		Width	Height	Depth
	D17Q to D47Q	160	275	190
	D62Q to C11Q	190	290	235
	C14Q to C17Q	200	340	265
	C21Q to C32Q	320	380	265
	C41Q to C66Q	400	670	300
	C79Q to M12Q	770	890	315

This document shows list prices, for discounts please contact your local branch

Three Phase 400V

Part number	kW	Description	Price	Discount	Nett price
ATS48D17Q	7.5	Standard duty 17A soft start / soft stop	£426.00	Call	Call
ATS48D22Q	11	Standard duty 22A soft start / soft stop	£482.00	Call	Call
ATS48D32Q	15	Standard duty 32A soft start / soft stop	£506.00	Call	Call
ATS48D38Q	18.5	Standard duty 38A soft start / soft stop	£564.00	Call	Call
ATS48D47Q	22	Standard duty 47A soft start / soft stop	£591.00	Call	Call
ATS48D62Q	30	Standard duty 62A soft start / soft stop	£624.00	Call	Call
ATS48D75Q	37	Standard duty 75A soft start / soft stop	£656.00	Call	Call
ATS48D88Q	45	Standard duty 88A soft start / soft stop	£838.00	Call	Call
ATS48C11Q	55	Standard duty 110A soft start / soft stop	£878.00	Call	Call
ATS48C14Q	75	Standard duty 140A soft start / soft stop	£1,053.00	Call	Call
ATS48C17Q	90	Standard duty 170A soft start / soft stop	£1,353.00	Call	Call
ATS48C21Q	110	Standard duty 210A soft start / soft stop	£1,421.00	Call	Call
ATS48C25Q	132	Standard duty 250A soft start / soft stop	£1,490.00	Call	Call
ATS48C32Q	160	Standard duty 320A soft start / soft stop	£1,620.00	Call	Call
ATS48C41Q	220	Standard duty 410A soft start / soft stop	£1,944.00	Call	Call
ATS48C48Q	250	Standard duty 480A soft start / soft stop	£3,078.00	Call	Call
ATS48C59Q	315	Standard duty 590A soft start / soft stop	£3,240.00	Call	Call
ATS48C66Q	355	Standard duty 660A soft start / soft stop	£4,292.00	Call	Call
ATS48C79Q	400	Standard duty 790A soft start / soft stop	£4,496.00	Call	Call
ATS48M10Q	500	Standard duty 1000A soft start / soft stop	£6,197.00	Call	Call
ATS48M12Q	630	Standard duty 1200A soft start / soft stop	£6,480.00	Call	Call

Prices shown exclude VAT & are subject to BPX standard terms & conditions of sale

Leicester
Tel: 0116 2999 100
Fax: 0116 2999 201

Northampton
Tel: 01604 759906
Fax: 01604 759916

Slough
Tel: 01753 619030
Fax: 01753 825418

Altivar 11

product information



Small single phase drive

- 0.18 – 2.2 kW
- Integrated class B EMC filter
- Simplified settings
- Positive logic
- 2 wire / 3 wire control
- 4 preset speeds
- Motor & drive protection
- Can catch a spinning load
- Can be mounted side by side

The Altivar 11 will make you forget mechanical & electromechanical solutions. Its flux vector control & numerous protective functions assure performance & continuous service.

Excellent dynamics: Use of an advanced algorithmic vector motor control minimises cycle times.

Garage doors, lift doors, etc.: Customisation of open/close cycles due to the assignment of several functions on the same logic input.

Dough mixers, saws, etc.: Perfect mastery of this motor driven application, no tripping in the event of torque surges.

Silent operation due to high switching frequencies.

Specifications

Output frequency		0.5 – 200 Hz		
Type of control		Sensorless flux vector control		
Speed range		1 – 20		
Degree of protection		IP20		
I/O	Analogue inputs	1 configurable		
	Logic inputs	4 assignable		
	Outputs	1 PWM open collector or assignable as logic		
	Relay outputs	1 protected		
Dialogue	Integrated display terminal or PowerSuite software			
EMC		Integrated class B filter		
Negative logic		No		
Dimensions		Width	Height	Depth
	ATV11HU05M2E	72	142	101
	ATV11HU09M2E	72	142	125
	ATV11HU12M2E & 18M2E	72	142	138
	ATV11HU29M2E & 41M2E	117	142	156

For braking resistors, modules & other accessories, please contact your local branch

This document shows list prices, for discounts please contact your local branch

Single Phase 200 - 240V

Part number	kW	Description	Price	Discount	Nett price
ATV11HU05M2E	0.18	Single phase drive, 1.1A	£91.00	Call	Call
ATV11HU09M2E	0.37	Single phase drive, 2.1A	£101.00	Call	Call
ATV11HU12M2E	0.55	Single phase drive, 3A	£106.00	Call	Call
ATV11HU18M2E	0.75	Single phase drive, 3.6A	£111.00	Call	Call
ATV11HU29M2E	1.5	Single phase drive, 6.8A	£168.00	Call	Call
ATV11HU41M2E	2.2	Single phase drive, 9.6	£194.00	Call	Call

Prices shown exclude VAT & are subject to BPX standard terms & conditions of sale

Leicester
Tel: 0116 2999 100
Fax: 0116 2999 201

Northampton
Tel: 01604 759906
Fax: 01604 759916

Slough
Tel: 01753 619030
Fax: 01753 825418

Altivar 31

single phase

product information



Single phase drive

- 0.18 – 2.2 kW
- Both IP21 & IP55 versions
- Integrated class A EMC filter
- Simplified start up with “plug & drive” function
- Protection of motor & drive
- Operation up to 50°C without derating
- CANopen & modbus integrated
- Can be mounted side by side

With its high performance & numerous functions, the Altivar 31 still remains simple. “Plug & drive” for immediate start-up, compact & open access to automation systems using integrated Modbus & CANopen, it complies with local specifications (voltage ranges, positive & negative logic, etc.)

High performance & reliability guaranteed: Operation on line at –5-% without derating, linear ramps, S, U or customised, brake sequence, etc.

Pumps & fans: Enhanced functionalities, automatic restart, stopping mode on faults, catch on the fly, etc.

Special machines: Current limitation, controlled stop on loss of line supply, traverse control (textile machines), etc.



Electrical Controls for Industry

Altivar 31

single phase

Specifications

Output frequency	0.5 – 500 Hz	
Type of control	Sensorless flux vector control	
Speed range	1 – 50	
Degree of protection	Heatsink drive	IP31 & IP41 on upper part with IP21 on terminals
	Enclosed drive	IP55
I/O	Analogue inputs	3 configurable
	Logic inputs	6 programmable
	Outputs	1 current (assignable as logic) & 1 voltage
	Relay outputs	2
Dialogue	Integrated display terminal or PowerSuite software	
Communication	Integrated	Modbus & CANopen
	Available as an option	DeviceNet, Ethernet TCP/IP, Fipio, Profibus DP
EMC	Class A	Integrated
	Class B	External filter available as an option

For braking resistors, modules & other accessories, please contact your local branch

Dimensions

Heatsink drives	Width	Height	Depth
H018M2 & H037M2	72	145	140
H055M2 & H075M2	72	145	145
HU11M2 & HU15M2	107	143	150
HU22M2	142	184	150

Enclosed drives	Width	Height	Depth
C018M2 – C075M2	210	240	163
CU11M2 & CU15M2	215	297	192
CU22M2	230	340	208

This document shows list prices, for discounts please contact your local branch

Single Phase 200 - 240V, IP21 drives on heatsinks

Part number	kW	Description	Price	Discount	Nett price
ATV31H018M2	0.18	Single phase panel mount drive	£116.00	Call	Call
ATV31H037M2	0.37	Single phase panel mount drive	£124.00	Call	Call
ATV31H055M2	0.55	Single phase panel mount drive	£142.00	Call	Call
ATV31H075M2	0.75	Single phase panel mount drive	£165.00	Call	Call
ATV31HU11M2	1.1	Single phase panel mount drive	£179.00	Call	Call
ATV31HU15M2	1.5	Single phase panel mount drive	£194.00	Call	Call
ATV31HU22M2	2.2	Single phase panel mount drive	£245.00	Call	Call
VW3A31401	---	Additional EMC filter for H018M2 - H075M2	£37.00	Call	Call
VW3A31403	---	Additional EMC filter for HU11M2 - HU15M2	£58.00	Call	Call
VW3A31405	---	Additional EMC filter for HU22M2	£84.00	Call	Call
VZ1L004M010	---	Line choke for H018M2 - H037M2	£48.00	Call	Call
VZ1L007UM50	---	Line choke for H055M2 - H075M2	£58.00	Call	Call
VZ1L018UM20	---	Line choke for HU11M2 - HU22M2	£76.00	Call	Call

Single Phase 200 - 240V, IP55 enclosed drives

Part number	kW	Description	Price	Discount	Nett price
ATV31C018M2	0.18	Single phase enclosed drive	£194.00	Call	Call
ATV31C037M2	0.37	Single phase enclosed drive	£213.00	Call	Call
ATV31C055M2	0.55	Single phase enclosed drive	£221.00	Call	Call
ATV31C075M2	0.75	Single phase enclosed drive	£239.00	Call	Call
ATV31CU11M2	1.1	Single phase enclosed drive	£263.00	Call	Call
ATV31CU15M2	1.5	Single phase enclosed drive	£294.00	Call	Call
ATV31CU22M2	2.2	Single phase enclosed drive	£323.00	Call	Call

The enclosure is equipped with an ATV31 drive with external heatsink & removable covers for adding 1 switch-disconnector or circuit-breaker, 3 buttons &/or LEDs, 1 potentiometer.

Prices shown exclude VAT & are subject to BPX standard terms & conditions of sale

Leicester
Tel: 0116 2999 100
Fax: 0116 2999 201

Northampton
Tel: 01604 759906
Fax: 01604 759916

Slough
Tel: 01753 619030
Fax: 01753 825418



Three phase drive

- 0.37 – 15 kW
- Both IP21 & IP55 versions
- Integrated class A EMC filter
- Simplified start up with “plug & drive” function
- Protection of motor & drive
- Operation up to 50°C without derating
- CANopen & modbus integrated
- Can be mounted side by side

With its high performance & numerous functions, the Altivar 31 still remains simple. “Plug & drive” for immediate start-up, compact & open access to automation systems using integrated Modbus & CANopen, it complies with local specifications (voltage ranges, positive & negative logic, etc.)

High performance & reliability guaranteed: Operation on line at –5-% without derating, linear ramps, S, U or customised, brake sequence, etc.

Pumps & fans: Enhanced functionalities, automatic restart, stopping mode on faults, catch on the fly, etc.

Special machines: Current limitation, controlled stop on loss of line supply, traverse control (textile machines), etc.



Electrical Controls for Industry

Altivar 31

three phase

Specifications

Output frequency		0.5 – 500 Hz
Type of control		Sensorless flux vector control
Speed range		1 – 50
Degree of protection	Heatsink drive	IP31 & IP41 on upper part with IP21 on terminals
	Enclosed drive	IP55
I/O	Analogue inputs	3 configurable
	Logic inputs	6 programmable
	Outputs	1 current (assignable as logic) & 1 voltage
	Relay outputs	2
Dialogue	Integrated display terminal or PowerSuite software	
Communication	Integrated	Modbus & CANopen
	Available as an option	DeviceNet, Ethernet TCP/IP, Fipio, Profibus DP
EMC	Class A	Integrated
	Class B	External filter available as an option

Dimensions

Heatsink drives	Width	Height	Depth
H037N4 – H055N4	105	143	130
H075N4 – HU15N4	107	143	150
HU22N4 – HU40N4	142	184	150
HU55N4 – HU75N4	180	232	170
HD11N4 – HD15N4	245	330	190

Enclosed drives	Width	Height	Depth
C037N4 – CU15N4	215	297	192
CU22N4 – CU40N4	230	340	208
CU55N4 – CU75N4	320	512	276
CD11N4 – CD15N4	440	625	276

For braking resistors, modules & other accessories, please contact your local branch

This document shows list prices, for discounts please contact your local branch

Three Phase 380 - 500V, IP21 drives on heatsinks

Part number	kW	Description	Price	Discount	Nett price
ATV31H037N4	0.37	Three phase panel mount drive	£210.00	Call	Call
ATV31H055N4	0.55	Three phase panel mount drive	£231.00	Call	Call
ATV31H075N4	0.75	Three phase panel mount drive	£239.00	Call	Call
ATV31HU11N4	1.1	Three phase panel mount drive	£257.00	Call	Call
ATV31HU15N4	1.5	Three phase panel mount drive	£279.00	Call	Call
ATV31HU22N4	2.2	Three phase panel mount drive	£399.00	Call	Call
ATV31HU30N4	3	Three phase panel mount drive	£468.00	Call	Call
ATV31HU40N4	4	Three phase panel mount drive	£520.00	Call	Call
ATV31HU55N4	5.5	Three phase panel mount drive	£588.00	Call	Call
ATV31HU75N4	7.5	Three phase panel mount drive	£777.00	Call	Call
ATV31HD11N4	11	Three phase panel mount drive	£928.00	Call	Call
ATV31HD15N4	15	Three phase panel mount drive	£1,229.00	Call	Call
VW3A31404	---	Additional EMC filter for H037N4 - HU15N4	£63.00	Call	Call
VW3A31406	---	Additional EMC filter for HU22N4 - HU40N4	£100.00	Call	Call
VW3A31407	---	Additional EMC filter for HU55N4 - HU75N4	£155.00	Call	Call
VW3A31409	---	Additional EMC filter for HD11N4 - HD15N4	£203.00	Call	Call
VW3A4551	---	Line choke for H037N4 - HU15N4	£95.00	Call	Call
VW3A4552	---	Line choke for HU22N4 - HU40N4	£116.00	Call	Call
VW3A4553	---	Line choke for HU55N4 - HU75N4	£126.00	Call	Call

Three Phase 380 - 500V, IP55 enclosed drives

Part number	kW	Description	Price	Discount	Nett price
ATV31C037N4	0.37	Three phase enclosed drive	£236.00	Call	Call
ATV31C055N4	0.55	Three phase enclosed drive	£268.00	Call	Call
ATV31C075N4	0.75	Three phase enclosed drive	£309.00	Call	Call
ATV31CU11N4	1.1	Three phase enclosed drive	£331.00	Call	Call
ATV31CU15N4	1.5	Three phase enclosed drive	£353.00	Call	Call
ATV31CU22N4	2.2	Three phase enclosed drive	£415.00	Call	Call
ATV31CU30N4	3	Three phase enclosed drive	£484.00	Call	Call
ATV31CU40N4	4	Three phase enclosed drive	£536.00	Call	Call
ATV31CU55N4	5.5	Three phase enclosed drive in metal without cover	£856.00	Call	Call
ATV31CU75N4	7.5	Three phase enclosed drive in metal without cover	£1,045.00	Call	Call
ATV31CD11N4	11	Three phase enclosed drive in metal without cover	£1,133.00	Call	Call
ATV31CD15N4	15	Three phase enclosed drive in metal without cover	£1,838.00	Call	Call

The enclosure is equipped with an ATV31 drive with external heatsink & removable covers for adding 1 switch-disconnector or circuit-breaker, 3 buttons &/or LEDs, 1 potentiometer.

Prices shown exclude VAT & are subject to BPX standard terms & conditions of sale

Leicester
Tel: 0116 2999 100
Fax: 0116 2999 201

Northampton
Tel: 01604 759906
Fax: 01604 759916

Slough
Tel: 01753 619030
Fax: 01753 825418

Altivar 61

IP21 drive

product information



Pump & ventilation drive

- 0.75 – 630 kW
- Quick start & easy diagnosis
- Energy saving
- Automatic catching of a spinning load
- Adaption of current limiting according to speed
- Noise & resonance suppression
- Integrated PID control
- Detection of absence of fluid
- Sleep function

The Altivar 61 drive is a frequency inverter for 3-phase asynchronous motors rated between 0.75 kW and 630 kW.

The drive has been designed for state-of-the-art applications in heating, ventilation and air conditioning (HVAC) in industrial and commercial buildings:

- Ventilation
- Air conditioning
- Pumping

The Altivar 61 can reduce operating costs in buildings by optimizing energy consumption whilst improving user comfort.

Its numerous integrated options enable it to be adapted to and incorporated into electrical installations, sophisticated control systems and building management systems.

The need for electromagnetic compatibility and a reduction in harmonics were taken into account at the outset of designing the drive.

Depending on its design characteristics, each type (UL Type 1/IP 20 and/or UL Type 12/IP 54) either has built-in class A or class B EMC filters and DC chokes, or these items are available as optional accessories.



Electrical Controls for Industry

Altivar 61

IP21 drive

Specifications

Dimensions

Degree of protection		IP21 & IP41 on the upper part
Drive	Output frequency	0.5 – 1600hz to 37kW & 0.5 – 500hz 45kW +
	Asynchronous motor	kn2 quadratic ratio, flux vector control with or without sensor, voltage/frequency ratio, energy saving ratio
	Synchronous motor	Vector control without speed feedback
	Transient overtorque	120 – 130% of nominal drive current for 60 seconds
Speed range		1 – 100 in open loop mode
Functions	Number of functions	>150
	Number of preset speeds	16
	Number of I/O	Analogue inputs 2-4/logic 6-20
		Analogue outputs 1-3/logic 0-8
Relay outputs 2-4		
		Safety input 1
Dialogue		Remote graphic display terminal or PowerSuite software
Communication	Integrated	Modbus & CANopen
	Available as an option	HVAC protocols: LonWorks, BACnet, METASYS N2, APOGEE FLN Industrial: Ethernet TCP/IP, Modbus/Uni-Telway, Fipio, Modbus Plus, Profibus DP, DeviceNet, InterBus
Cards	Available as an option	Multi-pump, I/O extension, "Controller Inside" programmable card
Reduction of current harmonics		DC choke integrated or supplied with the product
EMC	Class A	Integrated filter
	Class B	External filter available as an option

	W	H	D
H075 – HU22	130	230	175
HU30 – HU40	155	260	187
HU55 – HU75	175	295	187
HD11	210	295	213
HD15 – HD18	230	400	213
HD22	240	420	236
HD30 – HD37	240	550	266
HD45 – HD75	320	630	290
HD90 – HC11	320	920	377
HC13	360	1022	377
HC16	340	1190	377
HC22	440	1190	377
HC25 – HC31	595	1190	377
HC40 – HC50	890	1390	377
HC63	1120	1390	377

Note: For accessories / options, etc., please contact your local BPX branch.

This document shows list prices, for discounts please contact your local branch

Three Phase 380 - 480V, IP21 drives

Part number	kW	Description	Price	Discount	Nett price
ATV6 1H075N4	0.75	Three phase panel mount drive for pump & ventilation application	£259.00	Call	Call
ATV6 1HU15N4	1.5	Three phase panel mount drive for pump & ventilation application	£326.00	Call	Call
ATV6 1HU22N4	2.2	Three phase panel mount drive for pump & ventilation application	£410.00	Call	Call
ATV6 1HU30N4	3	Three phase panel mount drive for pump & ventilation application	£481.00	Call	Call
ATV6 1HU40N4	4	Three phase panel mount drive for pump & ventilation application	£533.00	Call	Call
ATV6 1HU55N4	5.5	Three phase panel mount drive for pump & ventilation application	£606.00	Call	Call
ATV6 1HU75N4	7.5	Three phase panel mount drive for pump & ventilation application	£800.00	Call	Call
ATV6 1HD11N4	11	Three phase panel mount drive for pump & ventilation application	£954.00	Call	Call
ATV6 1HD15N4	15	Three phase panel mount drive for pump & ventilation application	£1,262.00	Call	Call
ATV6 1HD18N4	18.5	Three phase panel mount drive for pump & ventilation application	£1,575.00	Call	Call
ATV6 1HD22N4	22	Three phase panel mount drive for pump & ventilation application	£1,894.00	Call	Call
ATV6 1HD30N4	30	Three phase panel mount drive for pump & ventilation application	£2,142.00	Call	Call
ATV6 1HD37N4	37	Three phase panel mount drive for pump & ventilation application	£2,608.00	Call	Call
ATV6 1HD45N4	45	Three phase panel mount drive for pump & ventilation application	£3,129.00	Call	Call
ATV6 1HD55N4	55	Three phase panel mount drive for pump & ventilation application	£3,672.00	Call	Call
ATV6 1HD75N4	75	Three phase panel mount drive for pump & ventilation application	£4,300.00	Call	Call
ATV6 1HD90N4	90	Three phase panel mount drive for pump & ventilation application	£5,432.00	Call	Call
ATV6 1HC11N4	110	Three phase panel mount drive for pump & ventilation application	£6,519.00	Call	Call
ATV6 1HC13N4	132	Three phase panel mount drive for pump & ventilation application	£8,205.00	Call	Call
ATV6 1HC16N4	160	Three phase panel mount drive for pump & ventilation application	£8,866.00	Call	Call
ATV6 1HC22N4	220	Three phase panel mount drive for pump & ventilation application	£11,412.00	Call	Call
ATV6 1HC25N4	250	Three phase panel mount drive for pump & ventilation application	£12,681.00	Call	Call
ATV6 1HC31N4	315	Three phase panel mount drive for pump & ventilation application	£14,271.00	Call	Call
ATV6 1HC40N4	400	Three phase panel mount drive for pump & ventilation application	£17,116.00	Call	Call
ATV6 1HC50N4	500	Three phase panel mount drive for pump & ventilation application	£19,327.00	Call	Call
ATV6 1HC63N4	630	Three phase panel mount drive for pump & ventilation application	£22,202.00	Call	Call

Prices shown exclude VAT & are subject to BPX standard terms & conditions of sale

Leicester
Tel: 0116 2999 100
Fax: 0116 2999 201

Northampton
Tel: 01604 759906
Fax: 01604 759916

Slough
Tel: 01753 619030
Fax: 01753 825418

Altivar 61

IP54 drive

product information



Pump & ventilation drive

- 0.75 – 90 kW
- Quick start & easy diagnosis
- Energy saving
- Automatic catching of a spinning load
- Adaption of current limiting according to speed
- Noise & resonance suppression
- Integrated PID control
- Detection of absence of fluid
- Sleep function

The Altivar 61 drive is a frequency inverter for 3-phase asynchronous motors rated between 0.75 kW and 90 kW.

The drive has been designed for state-of-the-art applications in heating, ventilation and air conditioning (HVAC) in industrial and commercial buildings:

- Ventilation
- Air conditioning
- Pumping

The Altivar 61 can reduce operating costs in buildings by optimizing energy consumption whilst improving user comfort.

Its numerous integrated options enable it to be adapted to and incorporated into electrical installations, sophisticated control systems and building management systems.

The need for electromagnetic compatibility and a reduction in harmonics were taken into account at the outset of designing the drive.

Depending on its design characteristics, each type (UL Type 1/IP 20 and/or UL Type 12/IP 54) either has built-in class A or class B EMC filters and DC chokes, or these items are available as optional accessories.

Specifications

Dimensions

Degree of protection		UL Type 12/IP54
Drive	Output frequency	0.5 – 1600hz to 37kW & 0.5 – 500hz 45kW +
	Asynchronous motor	kn2 quadratic ratio, flux vector control with or without sensor, voltage/frequency ratio, energy saving ratio
	Synchronous motor	Vector control without speed feedback
	Transient overtorque	120 – 130% of nominal drive current for 60 seconds
Speed range		1 – 100 in open loop mode
Functions	Number of functions	>150
	Number of preset speeds	16
	Number of I/O	Analogue inputs 2-4/logic 6-20
		Analogue outputs 1-3/logic 0-8
Relay outputs 2-4		
		Safety input 1
Dialogue		Remote graphic display terminal or PowerSuite software
Communication	Integrated	Modbus & CANopen
	Available as an option	HVAC protocols: LonWorks, BACnet, METASYS N2, APOGEE FLN Industrial: Ethernet TCP/IP, Modbus/Uni- Telway, Fipio, Modbus Plus, Profibus DP, DeviceNet, InterBus
Cards	Available as an option	Multi-pump, I/O extension, "Controller Inside" programmable card
Reduction of current harmonics		Integrated DC choke
EMC	Class A	Integrated filter

	W	H	D
W075 – WU22	235	490	272
WU30 – WU40	235	490	286
WU55 – WU75	255	525	286
WD11	290	560	315
WD15 – WD18	310	665	315
WD22	284	720	315
WD30 – WD37	284	880	343
WD45 – WD90	362	1000	364

Note: For accessories / options, etc., please contact your local BPX branch.

This document shows list prices, for discounts please contact your local branch

Three Phase 380 - 480V, IP54 drives

Part number	kW	Description	Price	Discount	Nett price
ATV61W075N4	0.75	Three phase enclosed drive for pump & ventilation application	£485.00	Call	Call
ATV61WU15N4	1.5	Three phase enclosed drive for pump & ventilation application	£525.00	Call	Call
ATV61WU22N4	2.2	Three phase enclosed drive for pump & ventilation application	£683.00	Call	Call
ATV61WU30N4	3	Three phase enclosed drive for pump & ventilation application	£772.00	Call	Call
ATV61WU40N4	4	Three phase enclosed drive for pump & ventilation application	£835.00	Call	Call
ATV61WU55N4	5.5	Three phase enclosed drive for pump & ventilation application	£1,035.00	Call	Call
ATV61WU75N4	7.5	Three phase enclosed drive for pump & ventilation application	£1,286.00	Call	Call
ATV61WD11N4	11	Three phase enclosed drive for pump & ventilation application	£1,656.00	Call	Call
ATV61WD15N4	15	Three phase enclosed drive for pump & ventilation application	£2,095.00	Call	Call
ATV61WD18N4	18.5	Three phase enclosed drive for pump & ventilation application	£2,252.00	Call	Call
ATV61WD22N4	22	Three phase enclosed drive for pump & ventilation application	£2,573.00	Call	Call
ATV61WD30N4	30	Three phase enclosed drive for pump & ventilation application	£2,856.00	Call	Call
ATV61WD37N4	37	Three phase enclosed drive for pump & ventilation application	£3,534.00	Call	Call
ATV61WD45N4	45	Three phase enclosed drive for pump & ventilation application	£4,251.00	Call	Call
ATV61WD55N4	55	Three phase enclosed drive for pump & ventilation application	£4,782.00	Call	Call
ATV61WD75N4	75	Three phase enclosed drive for pump & ventilation application	£5,585.00	Call	Call
ATV61WD90N4	90	Three phase enclosed drive for pump & ventilation application	£7,015.00	Call	Call

Prices shown exclude VAT & are subject to BPX standard terms & conditions of sale

Leicester
Tel: 0116 2999 100
Fax: 0116 2999 201

Northampton
Tel: 01604 759906
Fax: 01604 759916

Slough
Tel: 01753 619030
Fax: 01753 825418



High-power drive

- 0.75 – 500 kW
- Macro-configurations
- Quick start up
- Easy diagnostics
- Openess to all communication buses
- Full vector control
- Unrivalled basic equipment
- Protection of the motor, drive, machine & environment

The *leading edge!*

With this new generation of drives, the expertise and know-how of Schneider Electric within the variable speed drive domain is truly highlighted. Exceptional performance, advanced functions...whilst always keeping the emphasis on *simplicity*. *Open* to all communication networks, applications, users...the **Altivar 71** provides *ingenious solutions* for all your particular requirements.

A *powerful* fleet

- 0.75 to 500 kW
- 3-phase 380 to 480 V
- Integrated EMC level A filters.
- Worldwide offer:
- UL, CSA, CE, C-Tick, GOST...

Remarkable performance

- Up to 220% *overtorque*.
- Flux vector control with or without sensor for asynchronous motors.
- On-line auto-tuning (FVC).
- Speed or torque control.
- Output frequency up to 1000 Hz.
- Synchronous motor control without sensor

Expandable capabilities

- Basic equipment with a wealth of features: application functions,
- inputs/outputs, communication networks... that can be further
- extended by:
- input/output extension cards.
- encoder interface cards.
- communication cards.
- a Controller Inside programmable card.



Altivar 71

IP21 drive

Specifications

Dimensions

Degree of protection		IP21 & IP41 on the upper part
Drive	Output frequency	0.1 – 1600hz to 37kW & 0.1 – 500hz 45kW +
	Asynchronous motor	Flux vector control with or without sensor, voltage/frequency ratio, ENA System
	Synchronous motor	Vector control with & without speed feedback
	Transient overtorque	220% of nominal motor torque for 2 seconds & 170% for 60 seconds
Speed range		1 – 1000 in closed loop with encoder feedback, 1 – 100 in open loop
Functions	Number of functions	>150
	Number of preset speeds	16
	Number of I/O	Analogue inputs 2-4/logic 6-20
		Analogue outputs 1-3/logic 0-8
Relay outputs 2-4		
		Safety input 1
Dialogue		Remote graphic display terminal or PowerSuite software
Communication	Integrated	Modbus & CANopen
	Available as an option	Ethernet TCP/IP, Modbus/Uni-Telway, Fipio, Modbus Plus, Profibus DP, DeviceNet, InterBus
Cards	Available as an option	Encoder interface, I/O extension, "Controller Inside" programmable card
Reduction of current harmonics		DC choke integrated or supplied with the product
EMC	Class A	Integrated filter
	Class B	External filter available as an option

	W	H	D
H075 – HU22	130	230	175
HU30 – HU40	155	260	187
HU55 – HU75	175	295	187
HD11	210	295	213
HD15 – HD18	230	400	213
HD22	240	420	236
HD30 – HD37	240	550	266
HD45 – HD75	320	630	290
HD90	320	920	377
HC11	360	1022	377
HC13	340	1190	377
HC16	440	1190	377
HC20 – HC28	595	1190	377
HC31 – HC40	890	1390	377
HC50	1120	1390	377

Note: For accessories / options, etc., please contact your local BPX branch.

This document shows list prices, for discounts please contact your local branch

Three Phase 380 - 480V, IP21 drives

Part number	kW	Description	Price	Discount	Nett price
ATV71H075N4	0.75	Three phase panel mount drive for complex, high-power machines	£365.00	Call	Call
ATV71H15N4	1.5	Three phase panel mount drive for complex, high-power machines	£440.00	Call	Call
ATV71HJ22N4	2.2	Three phase panel mount drive for complex, high-power machines	£526.00	Call	Call
ATV71HJ30N4	3	Three phase panel mount drive for complex, high-power machines	£620.00	Call	Call
ATV71HJ40N4	4	Three phase panel mount drive for complex, high-power machines	£655.00	Call	Call
ATV71HJ55N4	5.5	Three phase panel mount drive for complex, high-power machines	£788.00	Call	Call
ATV71HJ75N4	7.5	Three phase panel mount drive for complex, high-power machines	£1,040.00	Call	Call
ATV71HD11N4	11	Three phase panel mount drive for complex, high-power machines	£1,225.00	Call	Call
ATV71HD15N4	15	Three phase panel mount drive for complex, high-power machines	£1,629.00	Call	Call
ATV71HD18N4	18.5	Three phase panel mount drive for complex, high-power machines	£2,016.00	Call	Call
ATV71HD22N4	22	Three phase panel mount drive for complex, high-power machines	£2,435.00	Call	Call
ATV71HD30N4	30	Three phase panel mount drive for complex, high-power machines	£2,963.00	Call	Call
ATV71HD37N4	37	Three phase panel mount drive for complex, high-power machines	£3,555.00	Call	Call
ATV71HD45N4	45	Three phase panel mount drive for complex, high-power machines	£4,172.00	Call	Call
ATV71HD55N4	55	Three phase panel mount drive for complex, high-power machines	£4,885.00	Call	Call
ATV71HD75N4	75	Three phase panel mount drive for complex, high-power machines	£5,634.00	Call	Call
ATV71HD90N4	90	Three phase panel mount drive for complex, high-power machines	£6,393.00	Call	Call
ATV71HC11N4	110	Three phase panel mount drive for complex, high-power machines	£7,516.00	Call	Call
ATV71HC13N4	132	Three phase panel mount drive for complex, high-power machines	£8,098.00	Call	Call
ATV71HC16N4	160	Three phase panel mount drive for complex, high-power machines	£10,918.00	Call	Call
ATV71HC20N4	200	Three phase panel mount drive for complex, high-power machines	£12,324.00	Call	Call
ATV71HC25N4	220	Three phase panel mount drive for complex, high-power machines	£14,013.00	Call	Call
ATV71HC28N4	280	Three phase panel mount drive for complex, high-power machines	£17,225.00	Call	Call
ATV71HC31N4	315	Three phase panel mount drive for complex, high-power machines	£20,772.00	Call	Call
ATV71HC40N4	355	Three phase panel mount drive for complex, high-power machines	£23,456.00	Call	Call
ATV71HC50N4	500	Three phase panel mount drive for complex, high-power machines	£26,944.00	Call	Call

Prices shown exclude VAT & are subject to BPX standard terms & conditions of sale

Leicester
Tel: 0116 2999 100
Fax: 0116 2999 201

Northampton
Tel: 01604 759906
Fax: 01604 759916

Slough
Tel: 01753 619030
Fax: 01753 825418



High-power drive

- 0.75 – 75 kW
- Macro-configurations
- Quick start up
- Easy diagnostics
- Openess to all communication buses
- Full vector control
- Unrivalled basic equipment
- Protection of the motor, drive, machine & environment

The *leading edge!*

With this new generation of drives, the expertise and know-how of Schneider Electric within the variable speed drive domain is truly highlighted. Exceptional performance, advanced functions...whilst always keeping the emphasis on *simplicity*. *Open* to all communication networks, applications, users...the **Altivar 71** provides *ingenious solutions* for all your particular requirements.

A *powerful* fleet

- 0.75 to 75 kW
- 3-phase 380 to 480 V
- Integrated EMC level A filters.
- Worldwide offer:
- UL, CSA, CE, C-Tick, GOST...

Remarkable performance

- Up to 220% *overtorque*.
- Flux vector control with or without sensor for asynchronous motors.
- On-line auto-tuning (FVC).
- Speed or torque control.
- Output frequency up to 1000 Hz.
- Synchronous motor control without sensor

Expandable capabilities

- Basic equipment with a wealth of features: application functions,
- inputs/outputs, communication networks... that can be further
- extended by:
- input/output extension cards.
- encoder interface cards.
- communication cards.
- a Controller Inside programmable card.



Electrical Controls for Industry

Altivar 71

IP54 drive

Specifications

Degree of protection		UL Type 12/IP54
Drive	Output frequency	0.1 – 1600hz to 37kW & 0.1 – 500hz 45kW +
	Asynchronous motor	Flux vector control with or without sensor, voltage/frequency ratio, ENA System
	Synchronous motor	Vector control with & without speed feedback
	Transient overtorque	220% of nominal motor torque for 2 seconds & 170% for 60 seconds
Speed range		1 – 1000 in closed loop with encoder feedback, 1 – 100 in open loop
Functions	Number of functions	>150
	Number of preset speeds	16
	Number of I/O	Analogue inputs 2-4/logic 6-20
		Analogue outputs 1-3/logic 0-8
		Relay outputs 2-4
		Safety input 1
Dialogue		Remote graphic display terminal or PowerSuite software
Communication	Integrated	Modbus & CANopen
	Available as an option	Ethernet TCP/IP, Modbus/Uni-Telway, Fipio, Modbus Plus, Profibus DP, DeviceNet, InterBus
Cards	Available as an option	Encoder interface, I/O extension, "Controller Inside" programmable card
Reduction of current harmonics		Optional chokes & passive filters
EMC	Class A	Integrated filter
	Class B	External filter available as an option

Dimensions

	W	H	D
W075 – WU22	235	490	272
WU30 – WU40	235	490	286
WU55 – WU75	255	525	286
WD11	290	560	315
WD15 – WD18	310	665	315
WD22	284	720	315
WD30 – WD37	284	880	343
WD45 – WD75	362	1000	364

Note: For accessories / options, etc., please contact your local BPX branch.

This document shows list prices, for discounts please contact your local branch

Three Phase 380 - 480V, IP54 drives

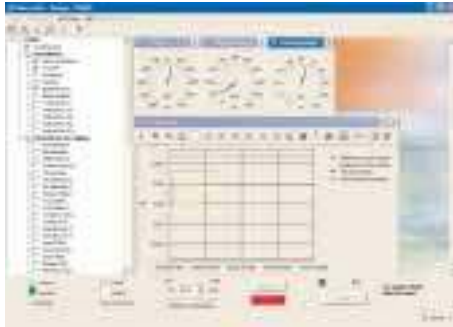
Part number	kW	Description	Price	Discount	Nett price
ATV71W075N4	0.75	Three phase enclosed drive for complex, high-power machines	£515.00	Call	Call
ATV71WU15N4	1.5	Three phase enclosed drive for complex, high-power machines	£578.00	Call	Call
ATV71WU22N4	2.2	Three phase enclosed drive for complex, high-power machines	£704.00	Call	Call
ATV71WU30N4	3	Three phase enclosed drive for complex, high-power machines	£826.00	Call	Call
ATV71WU40N4	4	Three phase enclosed drive for complex, high-power machines	£917.00	Call	Call
ATV71WU55N4	5.5	Three phase enclosed drive for complex, high-power machines	£1,103.00	Call	Call
ATV71WU75N4	7.5	Three phase enclosed drive for complex, high-power machines	£1,376.00	Call	Call
ATV71WD11N4	11	Three phase enclosed drive for complex, high-power machines	£1,754.00	Call	Call
ATV71WD15N4	15	Three phase enclosed drive for complex, high-power machines	£2,200.00	Call	Call
ATV71WD18N4	18.5	Three phase enclosed drive for complex, high-power machines	£2,730.00	Call	Call
ATV71WD22N4	22	Three phase enclosed drive for complex, high-power machines	£2,993.00	Call	Call
ATV71WD30N4	30	Three phase enclosed drive for complex, high-power machines	£3,465.00	Call	Call
ATV71WD37N4	37	Three phase enclosed drive for complex, high-power machines	£4,095.00	Call	Call
ATV71WD45N4	45	Three phase enclosed drive for complex, high-power machines	£5,093.00	Call	Call
ATV71WD55N4	55	Three phase enclosed drive for complex, high-power machines	£5,723.00	Call	Call
ATV71WD75N4	75	Three phase enclosed drive for complex, high-power machines	£6,405.00	Call	Call

Prices shown exclude VAT & are subject to BPX standard terms & conditions of sale

Leicester
Tel: 0116 2999 100
Fax: 0116 2999 201

Northampton
Tel: 01604 759906
Fax: 01604 759916

Slough
Tel: 01753 619030
Fax: 01753 825418



Drive software for the PC

- For TeSys model U, Altistart soft starts & Altivar drives
- Transfer configurations
- Adjust
- Monitor
- Control
- Save final configurations

The PowerSuite software workshop for the PC is a user-friendly tool designed for setting up control devices for TeSys model U controller-starters, Altistart soft start/soft stop units & Altivar variable speed drives.

The PowerSuite software can be used on its own to generate the device configuration. It can be saved, printed & exported to office automation software.

When the PC is connected to the device, the PowerSuite software can be used to transfer the generated configuration, adjust, monitor, control & save the final configuration.

In order to simplify maintenance operations, the PowerSuite software can be used to compare the configuration of a device currently being used with a saved configuration, manage the user's installed base of equipment, organise the installed base into folders, store maintenance messages & simplify Ethernet connection by storing the IP address.

The PowerSuite software can be used to present the device parameters arranged by function in the form of illustrated views of diagrams or simple tables, customise the parameter names, create user menus, sort parameters & display text in five languages.

There is also online contextual help on the PowerSuite tool & on the device functions by direct access to the user manuals.



Electrical Controls for Industry

PowerSuite

Specifications

Hardware & software environments

The PowerSuite software workshop can operate in the following PC environments & configurations:

- Microsoft Windows 98SE, 2000 & XP
- Pentium 111, 800MHz, hard disk with 300 MB available, 128MB RAM
- SVGA or higher definition monitor

Compatibility of PowerSuite software with the following devices:						
Connection	Controller-starter	Soft start / soft stop	Drives			
	TeSys model U	ATS48	ATV11	ATV31	ATV61	ATV71
Modbus	V1.40	V1.30	V1.40	V2.0	V2.30	V2.2
Ethernet (device equipped with an Ethernet TCP/IP card)	No	No	No	No	V2.30	V2.2
Ethernet via Modbus Ethernet Bridge	No	V1.50	No	V2.0	V2.30	V2.2
Bluetooth	No	V2.2	No	V2.2	V2.30	V2.2

This document shows list prices, for discounts please contact your local branch

PowerSuite software workshop

Part number	Item	Description	Price	Discount	Nett price
VW3A8 104	PowerSuite CD-ROM	1 program for PC in English, French, German, Italian & Spanish Variable speed drive & starter manuals	£121.00	Call	Call
VW3A8 105	PowerSuite update CD-ROM	1 program for PC in English, French, German, Italian & Spanish Variable speed drive & starter manuals	£37.00	Call	Call
VW3A8 106	Connection kit for PC serial port (for point-to-point Modbus connection)	1x 3m cable with 2 RJ45 connectors 1RS232/RS484 converter with 1x 9-way female SUB-D connector & 1RJ45 connector 1 converter for the ATV11 drive, with 1x 4-way male connector & 1RJ45 connector 1RJ45/9-way male SUB-D adapter for connecting ATV38/58/58F drives 1RJ45/9-way female SUB-D adapter for connecting ATV68 drives	£23.00	Call	Call
XGSZ24	RS232-RS485 interface (for multidrop Modbus connection)	1 multidrop Modbus converter for connection to screw terminals. Requires a 24V, 20mA power supply	£79.69	Call	Call
VW3A8 114	Modbus-Bluetooth adapter	1 Bluetooth adapter (10m range, class 2) with 1RJ45 connector 1x 0.1m cable with 2 RJ45 connectors for PowerSuite 1x 0.1m cable with 1RJ45 connector & 1 mini DIN connector for TwidoSoft 1RJ45/9-way male SUB-D adapter for connecting ATV38/58/58F drives	£89.00	Call	Call
VW3A8 115	USB-Bluetooth adapter for PC	This adapter is required for a PC which is not equipped with Bluetooth technology. It is connected to a USB port on the PC. Range of 10m (class 2)	£16.00	Call	Call

Prices shown exclude VAT & are subject to BPX standard terms & conditions of sale

Leicester
Tel: 0116 2999 100
Fax: 0116 2999 201

Northampton
Tel: 01604 759906
Fax: 01604 759916

Slough
Tel: 01753 619030
Fax: 01753 825418



Enclosure cooling fans

- Easy 'click in' installation
- Range of flowrates
- Range of suitable power supplies
- Minimal maintenance
- IP54 protection rating
- RAL7032 & RAL7035

The Texa range of ventilating units are a door or wall mounted range of fans and filters suitable for installation in enclosures. They have been designed to cool and prevent failure of electrical equipment.

All Texa units are quick and easy to install with a simple square cut and a 'click-in' installation method for the vast majority of enclosures. Once installed the enclosure can still be rated to IP54 standard.

All moving parts have been engineered to be highly reliable with an expected life of 30,000 hours.

A wide range of flowrates are available from 23 to 730 m³/h. These can be configured to blow in either direction at all sizes. Typically supply flow is used, this blows air into the enclosure and has the advantage of helping to keep dust off the electrical components.



Electrical Controls for Industry

Texa fans



Specifications

Air flow (m ³ h)	Voltage	Description	Dimensions (mm)			Part number
			Width	Height	Depth	
23 / 30	230	1ph, 50 / 60Hz fan	105	105	67	FAN08BNO*
	115	1ph, 50 / 60Hz fan	105	105	67	FAN08CNO*
	-	Exit grille	105	105	14	FIL08XNO*
57 / 61	230	1ph, 50 / 60Hz fan	150	150	71	FAN12BNO*
	115	1ph, 50 / 60Hz fan	150	150	71	FAN12CNO*
	-	Exit grille	150	150	28	FIL12XNO*
115 / 125	230	1ph, 50 / 60Hz fan	250	250	113	FAN23BNO*
	115	1ph, 50 / 60Hz fan	250	250	113	FAN23CNO*
	-	Exit grille	250	250	30	FIL25XNO*
230 / 262	230	1ph, 50 / 60Hz fan	250	250	121	FAN25BNO*
	115	1ph, 50 / 60Hz fan	250	250	121	FAN25CNO*
	-	Exit grille	250	250	30	FIL25XNO*
400 / 440	230	1ph, 50 / 60Hz fan	250	250	102	FAN28BNO*
	115	1ph, 50 / 60Hz fan	250	250	102	FAN28CNO*
	-	Exit grille	250	250	30	FIL25XNO*
520 / 580	230	1ph, 50 / 60Hz fan	325	325	161	FAN35BNO*
	115	1ph, 50 / 60Hz fan	325	325	161	FAN35CNO*
	-	Exit grille	325	325	30	FIL35XNO*
650 / 730	230	1ph, 50 / 60Hz fan	325	325	151	FAN39BPO*
	115	1ph, 50 / 60Hz fan	325	325	151	FAN39CPO*
	-	Exit grille	325	325	30	FIL35XNO*

* **NOTE:** Replace * with A for RAL7032 or B for RAL7035

For IP55 fans, spare filter material, etc. please contact your local branch.

This document shows list prices, for discounts please contact your local branch

Texa enclosure cooling fans & filters

Part number	Description	Price	Discount	Nett price
FAN08BNO*	230V, 1ph, 50/60Hz 23/30m ³ h enclosure cooling fan	£34.92	Call	Call
FAN08CNO*	115V, 1ph, 50/60Hz 23/30m ³ h enclosure cooling fan	£36.54	Call	Call
FAN12BNO*	230V, 1ph, 50/60Hz 57/61m ³ h enclosure cooling fan	£56.23	Call	Call
FAN12CNO*	115V, 1ph, 50/60Hz 57/61m ³ h enclosure cooling fan	£60.01	Call	Call
FAN23BNO*	230V, 1ph, 50/60Hz 115/125m ³ h enclosure cooling fan	£65.63	Call	Call
FAN23CNO*	115V, 1ph, 50/60Hz 115/125m ³ h enclosure cooling fan	£67.37	Call	Call
FAN25BNO*	230V, 1ph, 50/60Hz 230/262m ³ h enclosure cooling fan	£71.54	Call	Call
FAN25CNO*	115V, 1ph, 50/60Hz 230/262m ³ h enclosure cooling fan	£78.46	Call	Call
FAN28BNO*	230V, 1ph, 50/60Hz 400/440m ³ h enclosure cooling fan	£102.42	Call	Call
FAN28CNO*	115V, 1ph, 50/60Hz 400/440m ³ h enclosure cooling fan	£108.32	Call	Call
FAN35BNO*	230V, 1ph, 50/60Hz 520/580m ³ h enclosure cooling fan	£91.01	Call	Call
FAN35CNO*	115V, 1ph, 50/60Hz 520/580m ³ h enclosure cooling fan	£94.60	Call	Call
FAN39BPO*	230V, 1ph, 50/60Hz 650/730m ³ h enclosure cooling fan	£138.00	Call	Call
FAN39CPO*	115V, 1ph, 50/60Hz 650/730m ³ h enclosure cooling fan	£152.00	Call	Call
FIL08XNO*	Exit grille for 08 fan	£10.77	Call	Call
FIL12XNO*	Exit grille for 12 fan	£12.35	Call	Call
FIL25XNO*	Exit grille for 23, 25 & 28 fans	£15.94	Call	Call
FIL35XNO*	Exit grille for 35 & 39 fans	£18.80	Call	Call
NCT	Red thermostat for heater control	£9.40	Call	Call
NOT	Blue thermostat for cooling fan control	£9.40	Call	Call

Prices shown exclude VAT & are subject to BPX standard terms & conditions of sale

Leicester
Tel: 0116 2999 100
Fax: 0116 2999 201

Northampton
Tel: 01604 759906
Fax: 01604 759916

Slough
Tel: 01753 619030
Fax: 01753 825418

V2 -August, 2008